



Expanded Metal Mesh



HAOTONG WIRE MESH CO., LTD.

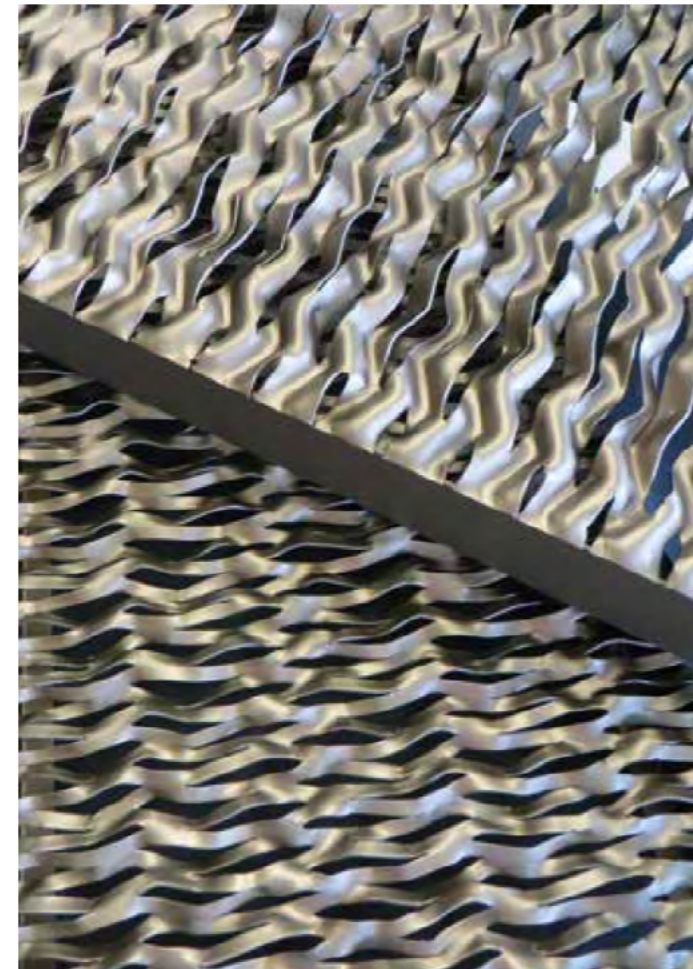
+86-311-89276065

wechat/whatsapp: +8615032072251

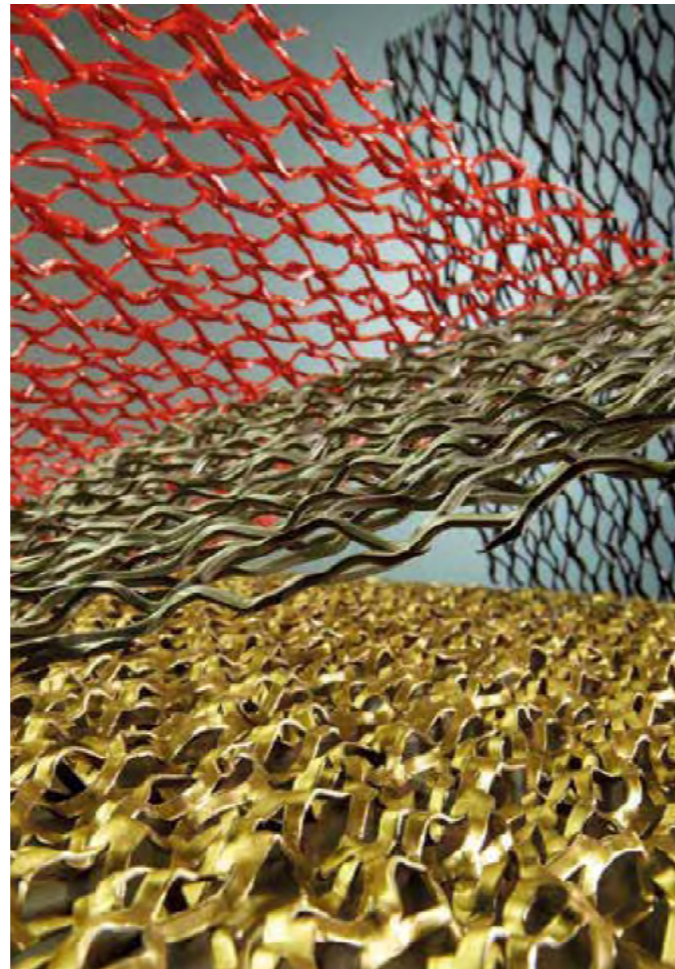
inquiry@ht-wiremesh.com

Shaping

Due to the open character, the expanded metal ceiling elements are especially suitable for representative and public areas. The folded expanded metal grants free view into the ceiling void and creates at the same time living, three-dimensional effects.



A high number of sizes, forms and geometries of meshes offer an individual, unique appearance of the ceiling. The structure surface of expanded metal is available in many different colours.



Advantages

- Unique design by individually folded expanded metal
- Structured surface on demand with high open area to have a wide view into the ceiling void
- The incidence of light creates varied, diverse looks

| | | |
|------------------------|--|--|
| <p>Material</p> | <p>Steel sheet is the most common material for manufacturing Expanded Metal Ceilings as it is highly stable and flexible. As an alternative we also supply Expanded Metal Ceilings in aluminium. The standard surface coating for Expanded Metal Ceilings is powder coating. Aluminium should always be finished with a clear varnish to prevent corrosion from oxygen in the air and from fingerprints and to help maintain its natural, metallic finish.</p> | |
| <p>Colours</p> | <p>Expanded Metal Ceilings are very popular in the colour 9006 according to Lindner but are of course available in all RAL and NCS colours. The appearance of an Expanded Metal Ceiling can also be influenced by the use of rolled expanded metal sheets, which, for reasons of stability and deflection, are recommended for ceiling layouts with smaller axial distances.</p> | |
| <p>Shapes</p> | <p>Expanded Metal Ceilings are available in an array of shapes. Whether square, rectangular, as a freely-hanging canopy ceiling or as concave or convex canopies- with Lindner Expanded Metal Ceilings your ceiling will always be the eye catcher of your room.</p> | |

Expanded Metal for Suspended Ceilings

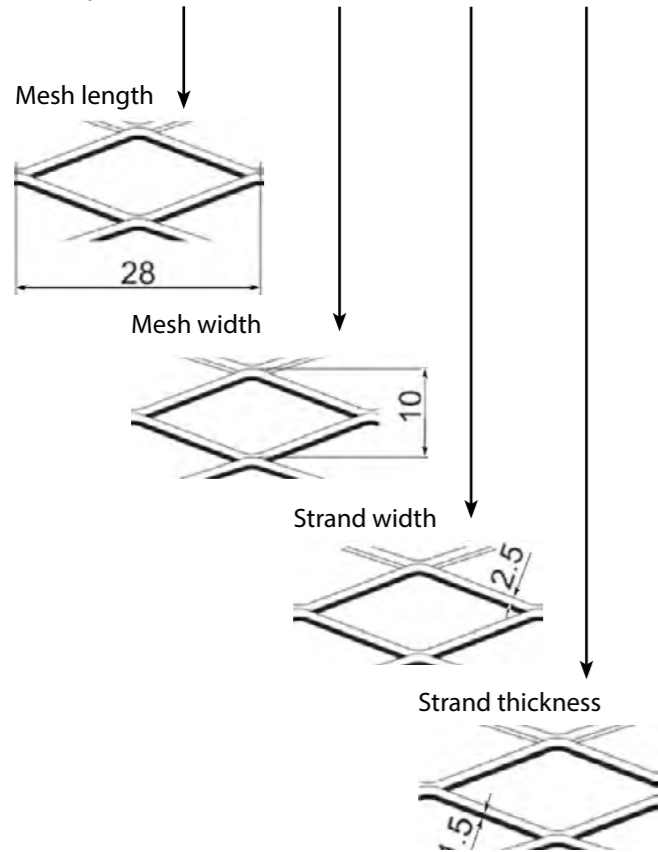
Individuality through materials and shapes

Their special punched shapes and mesh designs give Expanded Metal Ceilings an attractive finish. During the planning period all options should be taken into consideration.

Definition / Dimensions

As a rule expanded metal is defined using the following four dimensions.

Example: 28 x 10 x 2.5 x 1.5 mm



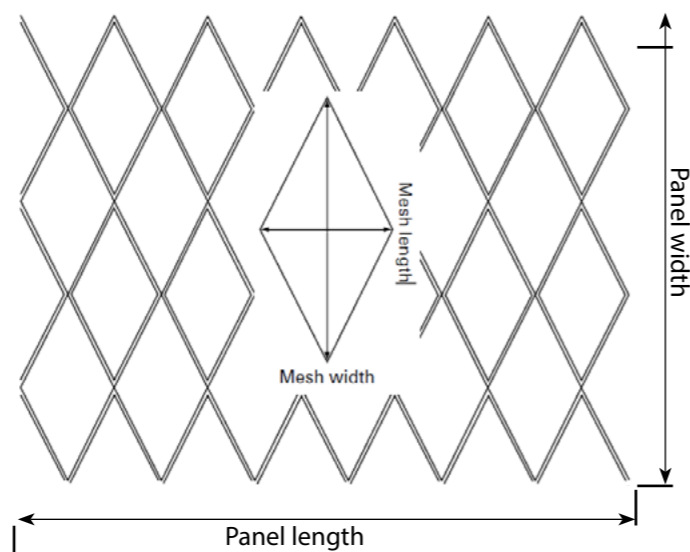
Quality standards

As a member of the Federation of Industrial Metal Ceiling Manufacturers (TAIM) we produce and supply according to the quality standards for expanded metal.

More information can be found at: www.rt-metalmesh.com

Expanded metal pattern / mesh arrangement

To maximise the stability and the deflection properties of the ceiling panels or integrated expanded metal sheets the following mesh arrangement should be chosen:



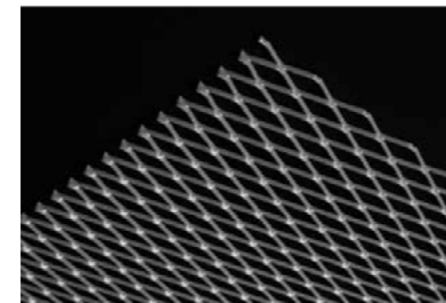
For customised, project-specific constructions we recommend the manufacture of a customised prototype.

Expanded metal is available in the following standard widths: 1000 mm, 1250 mm and 1500 mm. Some mesh types and sizes are available in 2000 mm widths.

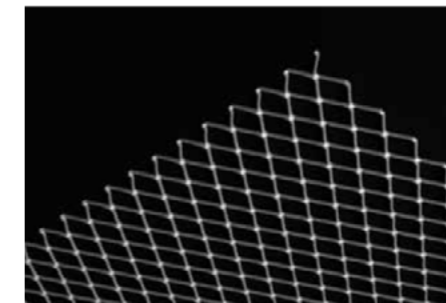
The design and the stability of the ceiling construction are influenced by mesh shape and size, the material (steel or aluminium) and its thickness and, last but not least, by the ceiling system itself. Another important aesthetic criterion is the visible expanded metal which appears either more open or more closed, depending on the angle of vision.

Standard mesh types

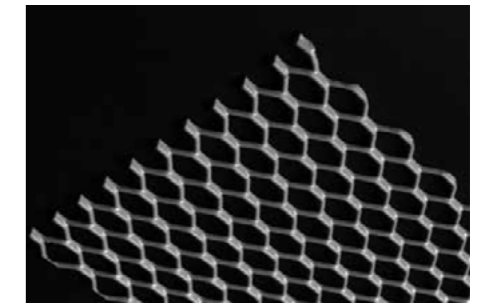
Diamond mesh



Square mesh

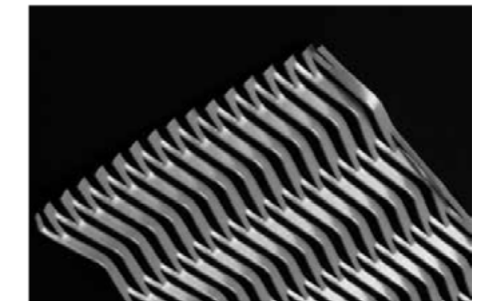
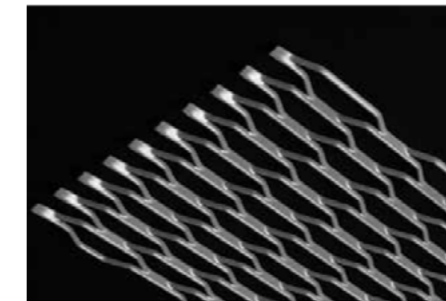
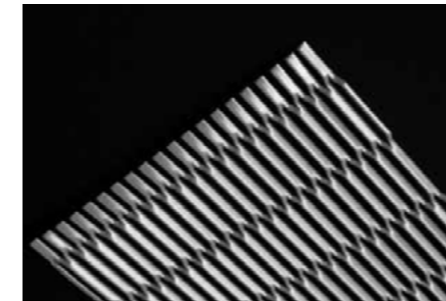


Long-link/hexagonal mesh



Special shapes

Special shapes and executions of mesh types are available on request. Extract of possible mesh types:



Material

Galvanised steel and aluminium, powder-coated

During powder coating, electrostatically charged polyester-based powder particles are blown onto a grounded base material. Afterwards the coating film is cross-linked at 180 °C.

Natural aluminium

Natural aluminium corrodes when it is exposed to oxygen in the air or animal fats; because of this aluminium should always be covered and protected with a clear varnish to preserve its metal surface.

Other materials are available on request.

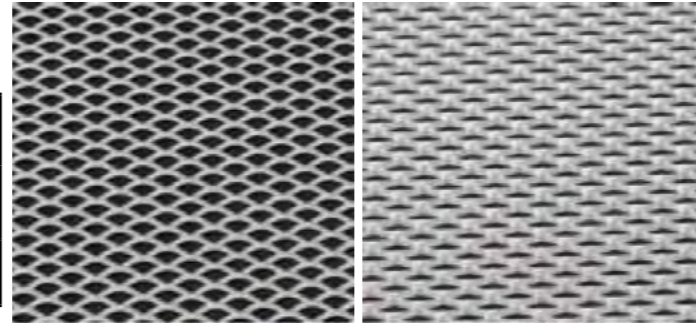
Expanded Metal Meshes

Extract from possible expanded metal meshes, further meshes on request

Diamond meshes

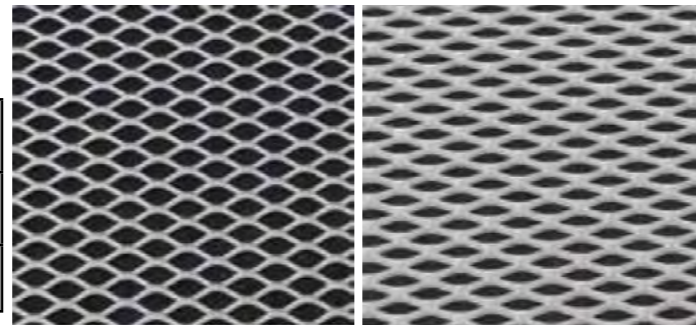
12.7x6x2.0x1.0

| Expanded metal thickness approx. 3.5mm 33% open area | | | |
|--|------------|--------------|-----------------|
| Mesh length | Mesh width | strand width | Stand thickness |
| 12.7mm | 6mm | 2mm | 1mm |



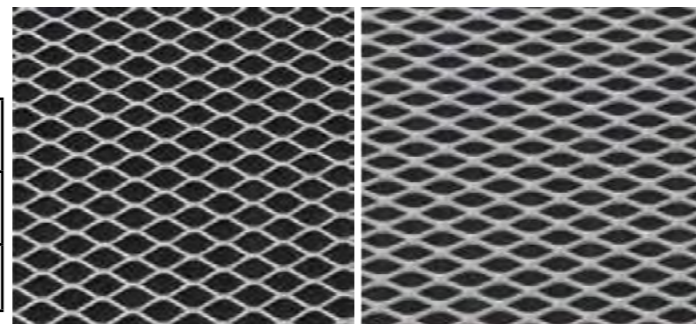
16x8x2.0x1.5

| Expanded metal thickness approx. 3.5mm 50% open area | | | |
|--|------------|--------------|-----------------|
| Mesh length | Mesh width | strand width | Stand thickness |
| 16mm | 8mm | 2mm | 1.5mm |



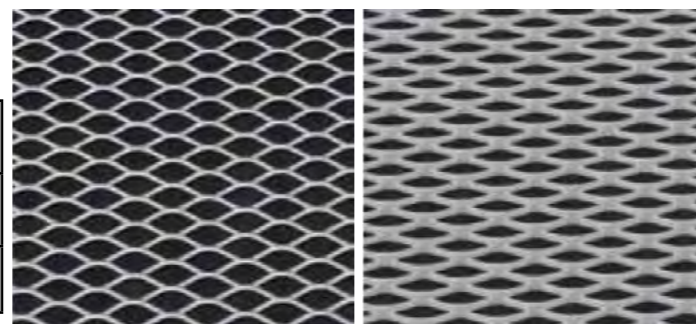
16x8x2.5x1.0

| Expanded metal thickness approx. 3.0mm 37% open area | | | |
|--|------------|--------------|-----------------|
| Mesh length | Mesh width | strand width | Stand thickness |
| 16mm | 8mm | 2.5mm | 1mm |



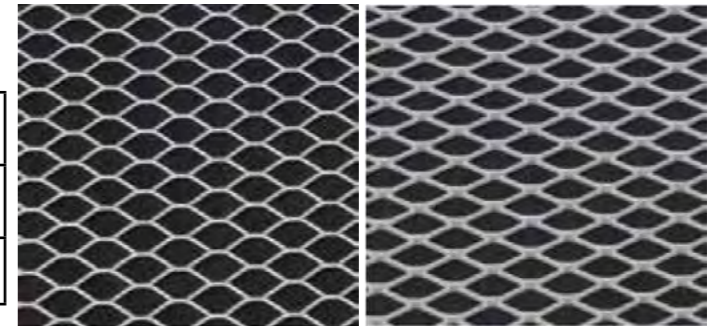
20x8x2.0x1.0

| Expanded metal thickness approx. 3.5mm 50% open area | | | |
|--|------------|--------------|-----------------|
| Mesh length | Mesh width | strand width | Stand thickness |
| 20mm | 8mm | 2mm | 1mm |



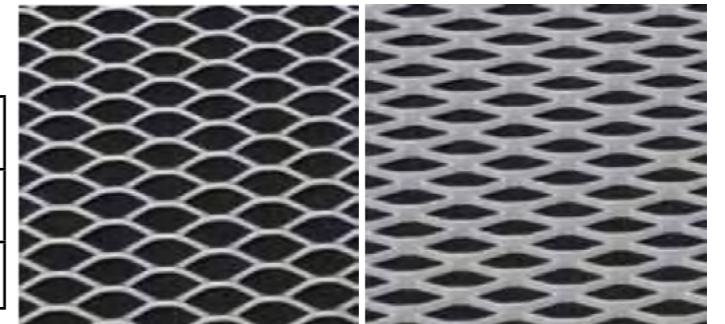
20x10x2.0x1.0

| Expanded metal thickness approx. 3.5mm 60% open area | | | |
|--|------------|--------------|-----------------|
| Mesh length | Mesh width | strand width | Stand thickness |
| 20mm | 10mm | 2mm | 1mm |



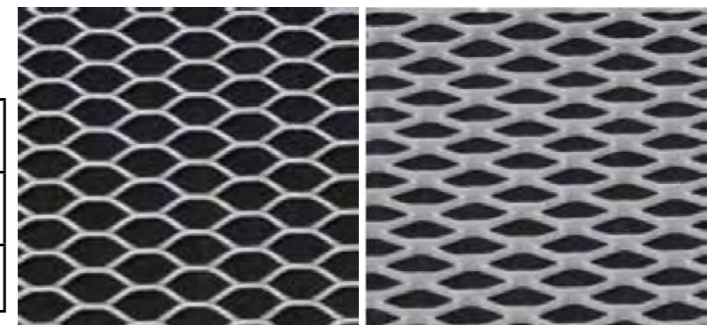
28x10x2.5x1.5

| Expanded metal thickness approx. 5.0mm 50% open area | | | |
|--|------------|--------------|-----------------|
| Mesh length | Mesh width | strand width | Stand thickness |
| 28mm | 10mm | 2.5mm | 1.5mm |



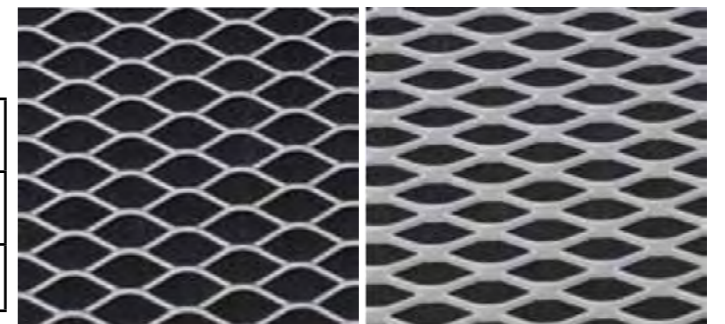
28x12x2.5x1.5

| Expanded metal thickness approx. 5.0mm 58% open area | | | |
|--|------------|--------------|-----------------|
| Mesh length | Mesh width | strand width | Stand thickness |
| 28mm | 12mm | 2.5mm | 1.5mm |



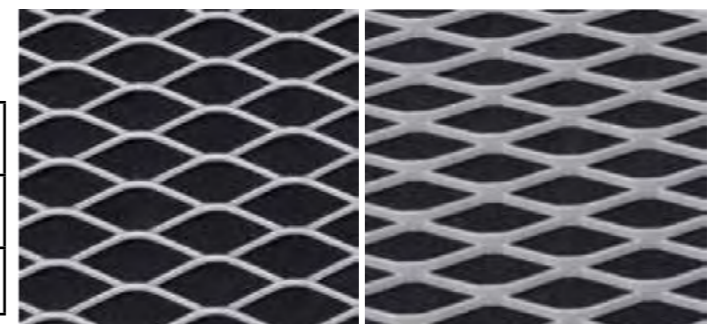
30x12x2.5x1.5

| Expanded metal thickness approx. 4.0mm 58% open area | | | |
|--|------------|--------------|-----------------|
| Mesh length | Mesh width | strand width | Stand thickness |
| 30mm | 12mm | 2.5mm | 1.5mm |



42x16x3.0x2.0

| Expanded metal thickness approx. 6.0mm 62% open area | | | |
|--|------------|--------------|-----------------|
| Mesh length | Mesh width | strand width | Stand thickness |
| 42mm | 16mm | 3mm | 2mm |



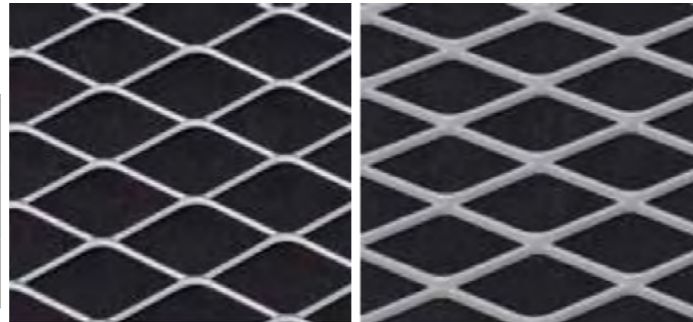
Expanded Metal Meshes

Extract from possible expanded metal meshes, further meshes on request

Diamond meshes

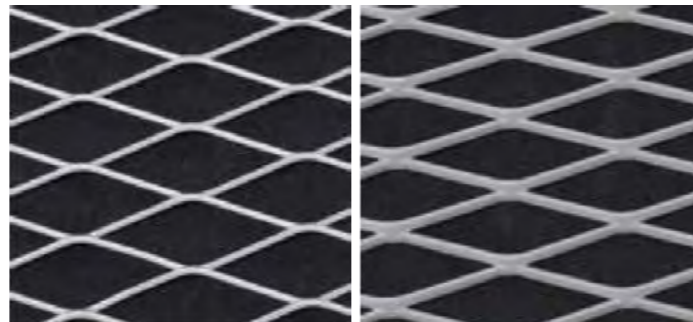
50x25x3.0x2.0

| Expanded metal thickness approx. 6.0mm 76% open area | | | |
|--|------------|--------------|-----------------|
| Mesh length | Mesh width | strand width | Stand thickness |
| 50mm | 25mm | 3mm | 2mm |



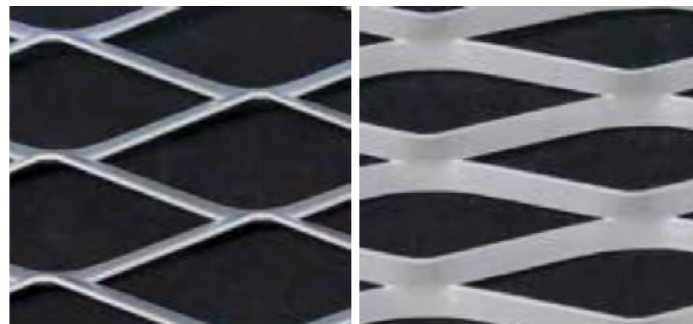
62x23x3.0x2.5

| Expanded metal thickness approx. 6.0mm 73% open area | | | |
|--|------------|--------------|-----------------|
| Mesh length | Mesh width | strand width | Stand thickness |
| 62mm | 23mm | 3mm | 2.5mm |



115x40x9.0x2.0

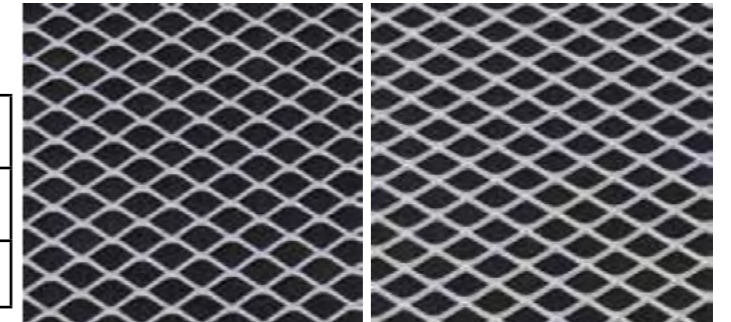
| Expanded metal thickness approx. 18.0mm 55% open area | | | |
|---|------------|--------------|-----------------|
| Mesh length | Mesh width | strand width | Stand thickness |
| 115mm | 40mm | 9mm | 2mm |



Square meshes

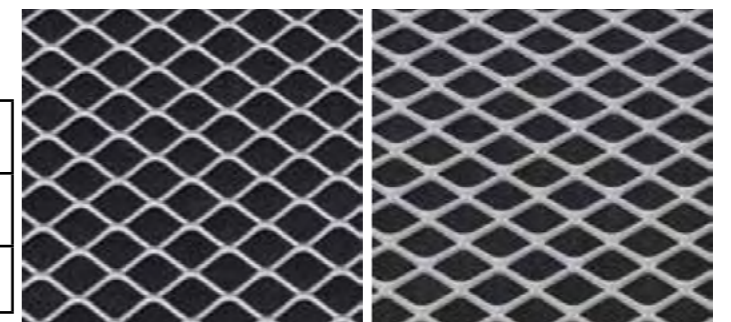
16x11x1.5x1.0

| Expanded metal thickness approx. 3.0mm 73% open area | | | |
|--|------------|--------------|-----------------|
| Mesh length | Mesh width | strand width | Stand thickness |
| 16mm | 11mm | 1.5mm | 1mm |



20x15x2.0x1.5

| Expanded metal thickness approx. 4.0mm 73% open area | | | |
|--|------------|--------------|-----------------|
| Mesh length | Mesh width | strand width | Stand thickness |
| 20mm | 15mm | 2mm | 1.5mm |





APPLICATIONS
FACADES CLADDING AND SUNSCREEN
FALSE CEILING
INTERIOR DESIGN

